

VIEWGLASS

Premium customised
decorative glass
for interior and
exterior design



DESIGN

VIEWGLASS



Photo quality designs in glass can be customised for interior and exterior environments

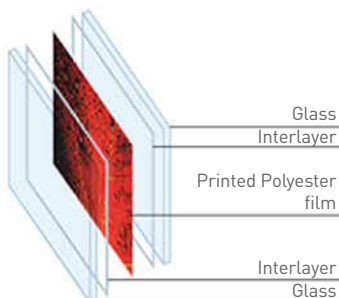
Description

VIEWGLASS is laminated glass with a transparent printed PET interlayer (polyester film).

For centuries artworks have had a significant role in the interior & exterior decor of buildings as revealed through history. In the modern day, artworks continue to be desirable for display and admiration within building environment of all kinds.

However it is felt that the expectation for the application and function of artworks has remained much the same - artworks are usually limited to display on a wall out of potential harms way.

VIEWGLASS is determined to revolutionize the integration of artwork in building environments. Through the application of photo quality artworks and designs with safety glass, unique design opportunities and solutions are enabled both structural and decorative, with VIEWGLASS.



Applications




- **Internal use :**
 - doors and side light inserts;
 - partitions;
 - balustrades;
 - splashbacks;
 - work top;
 - floors;
 - public art.
- **External use :**
 - facade;
 - windows;
 - vitrines.

Advantages

- High colour density and image detail. The VIEWGLASS process achieves incredibly high ink saturation to the PET substrate providing excellent vibrancy, smooth gradients and continuous tones;
- excellent durability to moisture, humidity, vandalism and colour fade for the laminated versions;
- easy to clean, printing is contained inside the laminated glass;
- compatible to a range of interlayers: PVB, EVA, TPU;
- printing on the film has a small influence on the adherence of the layer, but in no way impacts on the performance level;
- when used internally and externally, in Europe, the colour stability of the printed films is guaranteed for 5 years. The inks are protected by the interlayer film which filters out 99 % of UV radiation.

Range

The 3 VIEWGLASS variants differ according to the way they are used.

VIEW-GLASS VISION	The printed motif is opaque, with a white backing.	 Opaque
VIEW-GLASS OPALE	The printed motif is translucent and can be lit from behind.	 Translucent
VIEW-GLASS CRISTAL	The printed motif is transparent (app. 40 % in the printed area).	 Transparent

VIEWGLASS can be manufactured as float glass (SGG PLANILUX), as hardened glass (PLANIDUR) or as toughened safety glass (SECURIT). In the case of PLANIDUR or SECURIT, borings of up to 50 mm are also possible. Nevertheless, we advise to use low iron glass (SGG DIAMANT) in order to make a superior appearance in the colours. The edge working of VIEWGLASS is done after lamination except in the case of the toughened glass.



VIEWGLASS

Dimensions

VIEWGLASS VISION/OPALE/CRISTAL			
Type of glass	Composition	Thickness mm +/- 1 mm	Dimension (mm) Tolerance +/- 2 mm
SGG DIAMANT glass	44.4	9.5	1,560 x 2,000
SGG DIAMANT glass	55.4	11.5	1,560 x 2,500
SGG DIAMANT glass	66.4	13.5	1,560 x 3,000
SGG DIAMANT glass	88.4	17.5	1,560 x 3,500
SGG DIAMANT glass	10.10.4	21.5	1,560 x 4,000
toughened or hardened glass	44.4	9.5	1,250 x 2,000
toughened or hardened glass	55.4	11.5	1,250 x 2,500
toughened or hardened glass	66.4	13.5	1,560 x 3,000
toughened or hardened glass	88.4	17.5	1,560 x 3,500
toughened or hardened glass	10.10.4	21.5	1,560 x 4,000

- **Minimum dimensions:**

200 mm x 300 mm.

Larger sizes are available on request.
Positioning of the motif: +/- 2 mm from the edge of glass.

Tolerance regarding the size of the motif also increases by around +/- 3 mm/ml.

Artwork and File Submission Guidelines

- **Artwork Resolution/DPI**

For optimum image reproduction quality, files should be supplied at minimum of 240 DPI or higher where practical, at the intended application glazing dimensions.

For all artwork, a hardcopy proof and or individual colour swatches plus colour breakdowns should be provided in one of the universal colour systems such as PMS or Pantone.

- **Colour Mode**

The preferred colour mode for artwork to be supplied in is **CMYK**. RGB will be converted to CMYK colour mode.

- **File Formats**

GLASSOLUTIONS can accept both raster and vector format artwork. Where raster format artwork is used and supplied, such as where digital files have been produced from digital cameras or high resolution scans of film transparencies, then the preferred file format is **PSD, PDF, TIFF** or **JPG**. For all file formats,

ensure that minimal file compression is applied to files. Where vector format artwork is used and supplied, such as where artwork has been illustrated, then any text should be outlined or converted to paths. Additionally, all fonts should be supplied. The acceptable file formats include **AI, EPS, AutoCad, PDF**.

Note: Vector artwork is scaleable to any size at the maximum resolution.

- **Image Bleed and Crop Marks**

All artwork files should include a minimum image bleed of at least 10mm or 1/2", applied to all edges of each artwork file. In addition, crop marks should be placed at the edge of the bleed on all edges of each artwork file.

VIEWGLASS

• Labelling of Artwork Files

The project team will aim to accommodate and match any glazing or glass panels labelling system supplied.

The samples provided will generally include both a reduced size overall and a sectional cropping from artwork enlarged to the final application size at 1:1 scale. The samples are expected to provide a representation of the expected quality of each artwork file. Artwork files for samples should be submitted in the same manner as final project artwork. The desired sample dimensions for each sample is to be agreed upon per project.

• Submitting Artwork

Generally speaking, high resolution artwork files are large in file size. The most convenient and efficient method to supply artwork files is via DVD/CD-ROM or web-based FTP service (such as SFTS from Saint-Gobain).



All the brands quoted in this brochure are either registered or trademarked by Saint-Gobain.



For Glassolutions contact details by country, please refer to page 219

www.glassolutions.eu

Distributor