

Philippe Van Goethem, SVR-ARCHITECTS

Dolní Břežany Sports Hall, SPORADICAL

IDF headquarters, PIUARCH

Feldhaus, the city of Hanover in Central China

Archi-World® Academy 2017-2019, Review & winners



**ARCHI-EUROPE
GROUP®**

www.archi-europe.com

A new chapter for Archi-News®

We have the pleasure of presenting you the latest issue of Archi-News magazine showing for the first time its refreshed logo and eco-friendly color meeting the present architecture trends and expectations.

You will discover the winners of the fourth edition of Archi-World® Academy, our worldwide competition dedicated to students in architecture which, once again, was a huge success both in terms of quality of the projects and number of entries.

This issue contains an exhaustive portrait of SVR-ARCHITECTS, a renowned multidisciplinary Belgian architecture firm and its partner Mister Philippe Van Goethem.

SVR-ARCHITECTS has been recently building some of the most iconic projects in Belgium allying aesthetics, technical performances and efficiency.

We also invite you to discover three original projects in France, Czech Republic and China each one very different from another but with the same commitment to quality requirements and visual impact.

The first project concerns the new sports hall for the primary school of Dolní Břežany, a futuristic construction developed by the Czech Sporadical architecture office and built in the middle of cornfields, 'in the middle of nowhere' as architect Jakub Našinec likes to describe the location.

The second project IDF Habitat Headquarters in Champigny-sur-Marne (France) has been built in France by Italian office Piurarch.

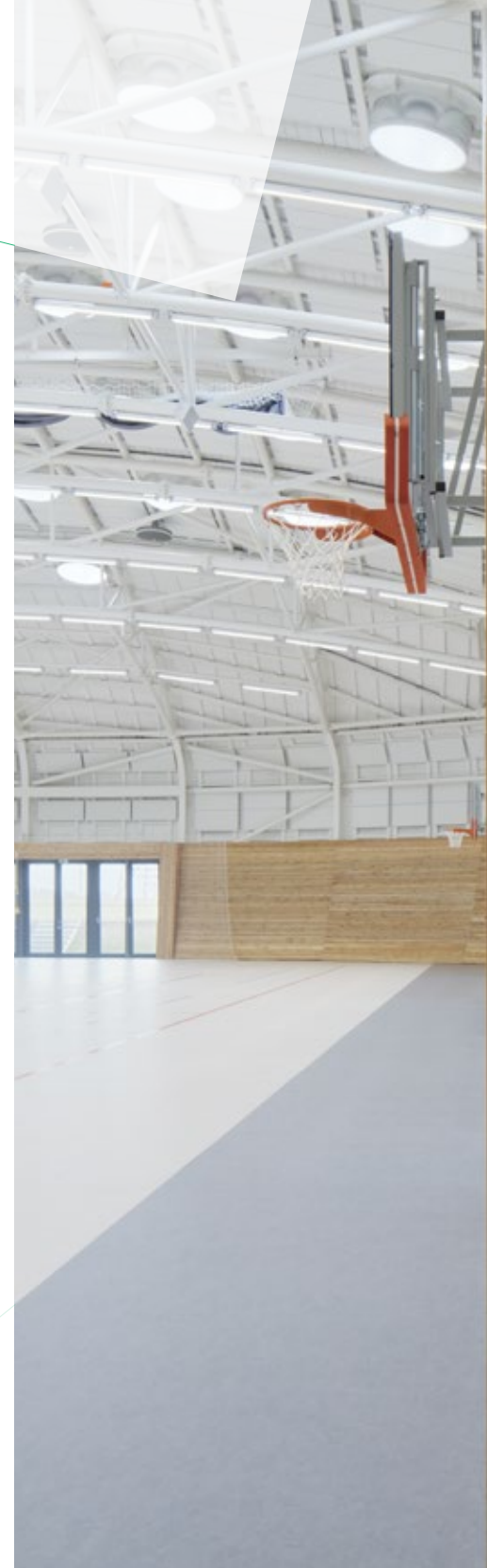
IDF represents the French company in charge of the development of social housing operations and reflects the desire to create an efficient, functional complex, an essential element in the area's transformation process.

Finally, we will be presenting a very original project: a beautiful replica of the Hanover city center in the 19th century built in the Chinese city of Changde which has become one of the most visited quarters of this six million megacity.

The most notable and significant feature of this project is related to the fact that only authentic and high standard quality materials were used which gives this project a real genuine German atmosphere thousand miles away from its original location.

In conclusion we have the great pleasure to announce the second edition of the European Architecture Awards®, an international competition whose first edition in 2017 gathered over 300 high quality projects from over 30 countries.

Registration will start as from 15 July and all information about this competition is available on the dedicated website: www.ea-awards.org





Dolní Břežany Sports Hall

SPORADICAL -

**Aleš Kubalík, Josef Kocián,
Jakub Našinec, Veronika Sávová
Czech Republic**

Photo © Jakub Skokan, Martin Tůma /
BoysPlayNice, www.boysplaynice.com

Content

ARCHI-NEWS.EU 51+2019

- 02 Editorial +** A new chapter
- 04 Portrait +** Philippe Van Goethem
SVR-ARCHITECTS, Belgium
- 09 Project +** Dolní Břežany Sports Hall
SPORADICAL, Czech Republic
- 13 Project +** IDF headquarters
PIUARCH, Italy
- 16 Project +** Feldhaus, the city of Hanover in Central China
- 19 Archi-World® Academy 2017-2019 +** Review & winners
- 26 Products**
- 28 Books**
- 30 Competitions**

Copyright 2019 Archi-Europe Group®.

Dennendreef 8a • B-3721 KORTESSEM
T +32 11 37 56 13 • Fax +32 11 37 56 07
www.archi-europe.com
press.19@archi-news.com

Layout **Jonathan Kinet**
Publisher **Jacques Allard**
Chief Editor **Jacques Allard**
Editor **Massimo Silvestre**
Layout Designer **Evi Bulen**
Printing **DV3**

ARCHI-NEWS.EU



Photo © SVR-ARCHITECTS

Whether in terms of form or content, SVR-ARCHITECTS aims for a modern balance between creative aesthetics, technical performance, cultural personality and economic performance.

Philippe Van Goethem

SVR-ARCHITECTS,
Belgium

www.svr-architects.eu

Qualified in 1984 as an architect (honors degree) from the St. Lukas Institute in Brussels, Philippe Van Goethem (°1960) was a CAD/CAM independent architect at the ITH engineering office in Brussels and an independent architect and project manager at SVR-ARCHITECTS before becoming Managing Director & Partner in 1998. This Antwerp based multidisciplinary office, founded in 1972 by P. Storme and J. Van Ranst, is managed by Philippe Van Goethem and Jean-Pierre Van Liefferinge. Working in this office is a strong team of motivated and talented architects, interior designers, engineers, urban planners and graphic designers. This multidisciplinary background allows the office to carry out design work for a broad range of national and international companies.

SVR-ARCHITECTS is specialized and expert in: Architecture (New buildings, Renovation, Restoration, Conversion), Feasibility studies, Space planning, Visualization, Sustainable Building and Research. The team is designing health & care institutions, laboratories (+ programming), accommodations (social & residential), offices, industry & logistics, leisure & retail, mixed-use, airport-related projects & hotels. With a vision to help

Life science park Bioscape, Zwijnaarde (2018)

Commissioned by the developer Biovest, SVR-ARCHITECTS designed a brand new campus for biotech companies: Bioscape. Executed in silver-coloured aluminium and glass, four individual lab buildings with four to six above-ground storeys were placed asymmetrically, as if set down by nature. Wadis between the buildings provide ecological water management. Traversable and transparent, the site is surrounded by a flower meadow, tall grasses and young trees. Bioscape is an authentic Life Science Park, with around 16,200 m² of lab space, where almost 500 employees develop their talents daily.



© SVR-ARCHITECTS - Photo Steven Massart

Office building Guimard 9, Brussels (2017)

In 2014 SVR-ARCHITECTS won a competition to thoroughly renovate an existing office building in Brussels. The challenge was to realize a contemporary, passive office building with a BREEAM 'Excellent' certificate. To attain this certificate and to optimize the usable office area, it was decided to make a new structure of slender concrete columns and beams. The existing load-bearing façade elements were replaced by a light, high-tech façade. Using opaque elements and printing the façade gives alternating transparent and semi-transparent effects.

At each level the façade line is shifted to create a fascinating play of volumes. The flexible office plans were created by moving the rear façade. By maximizing the transparent façade, the application of a very compact cool ceiling and the centralization of the services on the façade side, light and very flexible office spaces were made. This also literally shifted the boundaries of the building.



© SVR-ARCHITECTS - Photo Steven Massart



© SVR-ARCHITECTS - Photo Steven Massart

Training center European parliament, Brussels (2018)

The building located at Rue Montoyer 63 is owned by Leasinvest, for whom SVR-ARCHITECTS took part in a competition organized by the European Parliament. The design for the construction of a new training centre for the employees of the European Parliament was selected as winner.

Items of particular interest in the building, located at the junction of Rue Montoyer and Rue d'Arlon, include, apart from a large auditorium, some 30 training rooms, offices and an underground car park.

BREEAM and Passive House Certification is being sought for the whole project.



© SVR-ARCHITECTS - Photo Steven Massart



© SVR-ARCHITECTS - Photo Steven Massart

Residential care centre, assisted living residences Tombeekheyde, Overijse (2016)

A unique icon of Modernism is re-emerging from its ruins at a distance of barely 20 km from Brussels. Tombeekheyde, taken over by AG Real Estate, has commissioned SVR-ARCHITECTS to put the finishing touches to the 'Tombeekheyde' project, being the renovation, extension and change of use of the sanatorium dating from 1936 that was designed by architect Maxime Brunfaut. Since 1993 the complex has been protected as a monument, and the park as a landscape. In 2009 it was awarded the status of architectural heritage.

This building, at the end of a wide driveway and at the heart of natural surroundings, has everything of a Grand Hôtel: a large volume with straight lines, with central arched extension resembling the bow of a ship. There is also a clean look with ceramic tiles adorning the façades, the spacious terraces and the generous glass all around. This look is being respected in SVR-ARCHITECTS' restoration concept. The interior reveals a contemporary interpretation of what sun and light, air and space meant at the time as stimulating factors. The new residents will enjoy an optimal climate and comfort thanks to new technologies in the field of glass use, lighting, air circulation and thermal and acoustic insulation.



© SVR-ARCHITECTS - Photo Steven Massart

Kievit fase IIB (2018)

Project design consisted in the development of offices, apartments and commercial spaces within one block. The project had to fit in with Kievit urbanisation zone III. At street level in particular the two projects have to form a unit together with the adjacent railway embankment.

The volumes of the block consist of two towers built on a base. The base is the same height as the project for urbanisation zone III and the railway embankment.

the customers think in multiple dimensions about tomorrow's realities and to accompany them into the future by creating optimal configurations for all users. In doing so we look beyond the initial task.

The office has an impressive portfolio of completed projects, among others the new Zaventem airport's arrival terminal at ground level with a commercial area (concept development), the Casino Kursaal in Ostend, the extension, renovation and restauration of the BNP Paribas Fortis headquarters in Brussels, various projects for UZA in Antwerp since 2005, the renovation and extension of Flagey, an iconic former broadcasting building in Brussels.

All projects are particularly customer-focused and the result demonstrates a special commitment to people, society and the sustainability, in terms of materials and relationships. The result of the experience, creativity and

skills of the architects is expressed in a building which forms a recurring link in the company's integral process of value creation.

THE STRATEGY of SVR-ARCHITECTS is:

- not just to design sustainable buildings, but also build sustainable relationships;
- to create added value through our experience, expertise and creativity;
- to meet our commitments to cost, quality and timing; to cooperate with our clients

SVR-ARCHITECTS is keen to prove itself: again, together with you, differently.

Shape your world



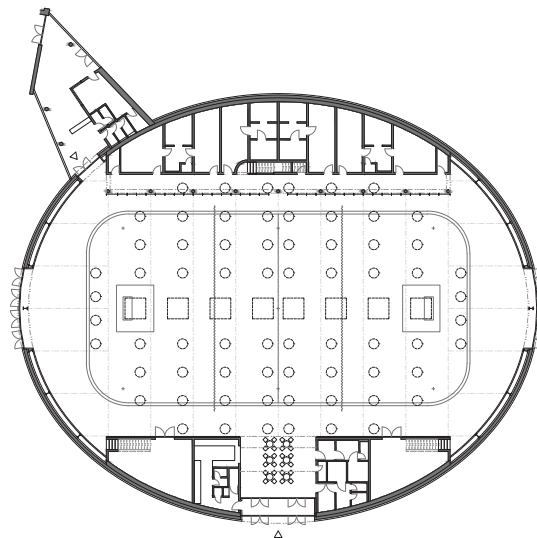
Rockfon® Mono® Acoustic

is more than a ceiling. It is a surface solution designed to enrich the beauty of your design.

Dolní Břežany Sports Hall

SPORADICAL Architects
(Czech Republic)

'We have designed the sports hall for children, and it makes a difference where children train, exercise and enjoy gymnastics. Building has a tremendous influence on people. You've got to remember that', asserted architect Jakub Našinec when explaining the background for the Dolní Břežany Sports Hall.



Photos © Jakub Skokan, Martin Tůma / BoysPlayNice, www.boysplaynice.com



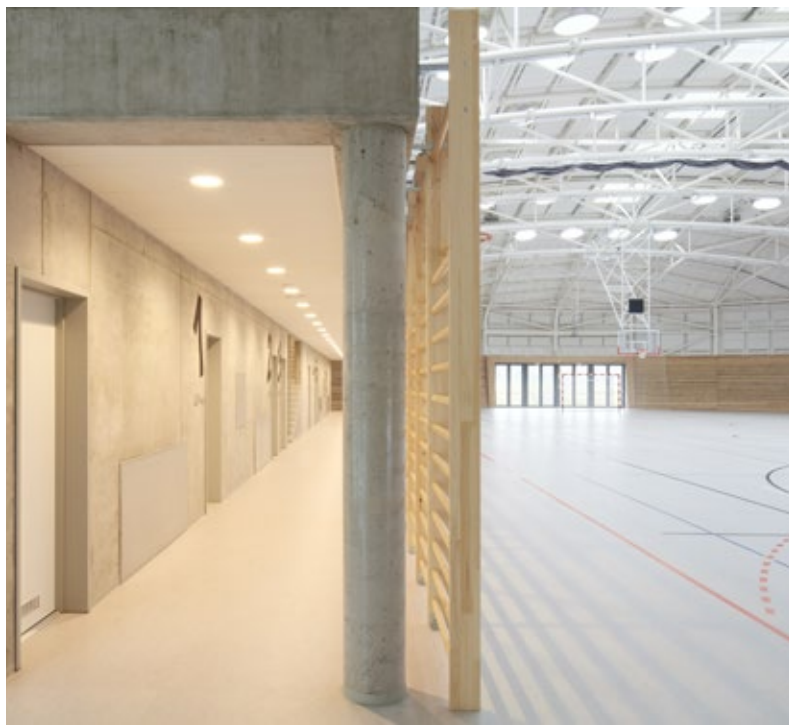
The new-build sports hall adjoins the Dolní Břežany primary school. It can be used by the school for physical education classes, and is open to the public for sports activities and as a cultural venue. Well integrated with its surroundings and the public space, its modern look is an attraction and inspiration for the area. The sports surface is 45 × 25 meters, and the grandstand provides seating for 250 spectators.

Having undergone radical changes in the last few years, Dolní Břežany is a modern and attractive place for living. The municipality has been very active in cultivating the public space in the long term and architecture and town planning aspects are a major focus when considering new projects. The primary school complex adjoining the sports hall has also undergone a major refurbishment and extension; the sports hall is its further development stage. The Břežany School has obtained a new space for physical education; the hall is used by local sports clubs and by the general public in the evenings for recreational sports. The generous dimensions of the interior make the venue suitable for cultural and social events.

The building is situated on the edge of a built-up area, in the center of a large development zone. An attractive architectural concept – a spatial rotational ellipsoid form – is a response to both current requirements and an unknown future. The inauguration and operation of the hall can serve as a stimulus and inspiration for the further growth of the municipality, which is why the connection to the surroundings and the public space is as important as the natural link with the primary school.

The hall has a rounded, smooth and abstract shape. The dome draws the scale closer to humans, the metallic surface mirrors the surroundings, while the borders of the sky and of the roof remain blurred. The building camouflages its real dimensions and looks smaller than it is in reality. The wide staircase in front of the hall, embedded into the terrain like the building itself, delineates the public space and creates a natural amphitheater.

While the exterior distinguishes the sports hall from the school, the interior blends with it using a combination of white and grey surfaces and



solid timber. The interior layout reflects the surroundings. The entrance for the visitors is perpendicular to the street and the parking lot, the west facing sliding window with a view of the town provides a connection with the school yard, and the east facing window is a peek into the future. The hall is integrated into the school by means of a walkway. The heart of the hall is a sports surface of 45 × 25 meters, of 8–9 meters in height, vertically divided into three parts using mobile blinds. Each of the thirds fits a volleyball court; the division makes it possible to run three PE classes in parallel. The changing rooms with sanitary facilities are situated on the school side, on the ground floor, and wall bars divide them from the sports area; the machine room and offices are on the first floor. On the audience side, there is a grandstand for 250 spectators, located above storage rooms for sports equipment and other facilities. A gangway connecting the two parts of the grandstand overlooks an open vestibule with a snack bar, also an important space.

www.sporadical.cz



Photos © Jakub Skokan, Martin Tůma / BoysPlayNice, www.boysplaynice.com



ArchiVisit®

CREATE NEW BUSINESS WITH ARCHITECTS
personal visits to top architects and interior
designers in Belgium & GH Luxembourg

DISCOVER OUR PROCEDURE AND ADVANTAGES



ArchiVisit, by Archi-Europe Group
Dennendreef 8
B - 3721 Kortesseem
☎ +32 11 37 56 13
✉ info@archivisit.be
www.archivisit.be

 **ARCHI-EUROPE
GROUP®**

The new IDF Habitat Headquarters in the Métropole du Grand Paris (2017)

Piuarich, Stefano Sbarbati and Incet Ingénierie

Extreme organizational flexibility, attention to environmental quality and accurate interpretation of the setting, the new IDF Habitat in Champigny-sur-Marne perfectly meets all the requirements of the International design competition held in 2013.



Photo © Sergio Grazia

Designed by Piuarich, Stefano Sbarbati and Incet Ingénierie, the Champigny-sur-Marne headquarters of IDF Habitat, the French company in charge of the development of social housing operations, were inspired by the desire to create an efficient, functional complex, and above all one that stands as an indispensable element in the area's transformation process. The building is in fact part of the so-called "ZAC des Bords de Marne," an ambitious redevelopment program aimed at defining a new social, cultural and productive sector connected with the city, interpreting expectations and generating a system with a strong identity.

Characterized by an L-shaped plan and a silhouette that varies in height, the volumes develop into an articulated form, establishing crisp lines and allowing the square in front to be designed and defined as a collective space. Each side also reacts to the existing surrounds through a relationship of solid and empty spaces: at the entrance, and thus facing the square, the façade is a permeable screen completely covered by glass hidden behind a system of loggias of varying heights, interrupted by a series of breaks in the pattern that make the composition more dynamic. This front is proposed here as a section through which one glimpses the

working environments, including the lobby, small meeting rooms, private offices and the large stairway, or, conversely, as a way to project the life of the building toward the outside. The side of the building opposite the entrance, facing the railroad and along the road, is more compact with a tight rhythm of vertical openings: these are the south, east and west façades, where it is necessary to filter the solar gain and to create an acoustic barrier against the noise of trains passing by. The shell is made of concrete cast onsite and then smoothed to create a uniform effect. It integrates the construction system, which is connected to prefabricated hollow core slabs with a span of 13 meters, without any need for intermediate supports. The result is a free plan, which can be organized according to needs: a solution made possible not only by the absence of pillars and supporting walls, but also by the systems installations, which run vertically at the crossing point between the two wings before being inserted into the floating floor at each level. The modularity of the façades, marked by windows 67.5 cm wide spaced at 135 cm intervals, also contributes to the same objective and facilitates any changes in the layout of the internal spaces.

The only “rule” for the flexible layout, which can be changed over time by IDF Habitat, is the continuous juxtaposition of work areas and collective areas. The four floors of offices above the basement – devoted entirely to parking because the structure stands on land at risk of flooding – mix different types of spaces and include large socialization areas both indoors and outdoors, thus ensuring a high quality environment for employees. This quality is enhanced by the roof terrace, which adds to the defining of a pleasant place with tables, seating, deckchairs and sun shading elements.

The expressive forms of the building therefore originate from the search for sustainability at all levels and from the ongoing dialogue with the surrounds and with the broader redevelopment program for the Champigny-sur-Marne area, delivering architecture with a strong identity, which accurately interprets the existing elements and structures within the setting.

www.piuarch.it

Photo © Sergio Grazia



Photo © Sergio Grazia



Photo © Martin Agyroglo



Photo © Sergio Grazia



Photo © Sergio Grazia

EUROPEAN ARCHITECTURE AWARDS[®] 2019/2020

SECOND
EDITION

WWW.EA-AWARDS.EU

TOPIC

**'When Creativity
and Innovation
meet Sustainability'**

OPEN TO ARCHITECTS IN
ALL DISCIPLINES WORLDWIDE

CATEGORIES

- ▶ Office buildings
 - ▶ Public buildings
 - ▶ Healthcare facilities
 - ▶ Education facilities
 - ▶ Innovating housing and
Urban development
 - ▶ Non-Residential projects
- ▶ **Special Prize for integrated
acoustic & well-being solutions**

DATES TO REMEMBER

Entry submission:
15 July 2019

Submission deadline:
28 February 2020

Winners announcement
and awarding ceremony:
Brussels May 2020

JURY MEMBERS

MC A Mario Cucinella
Architects (Italy)



© Vanessa Vettorello

Philippe Samyn and
Partners (Belgium)



© Samyn and Partners
architects & engineers

Huber Staudt Architekten
bda (Germany)



C.F. Mølller Architects
(Denmark)



ZDA Zoboki Design &
Architecture (Hungary)



partners

EPSON[®]
EXCEED YOUR VISION

Rockfon[®]

OUTDOOR[®]
wood concepts
nature, design & innovation



media partners

ARCHI-NEWS.EU

ARCHI-EUROPE
GROUP[®]

institutional partner



The City of Hanover in Central China, an original replica of the city's architectural style in the 19th century

RhineScheme Architectural & Urban Design
(Beijing) Co., Ltd.

Since its inauguration this site has immediately become one of the cosiest places where people can discover and appreciate an authentic European stylish atmosphere.



Photos © JF Photography, Beijing



In the midst of the Chinese six-million metropolis Changde, in the northeast of the province Hunan, a contemplative quarter was developed with angular lanes, pretty gable roofs and colorful facades in the northern German architectural style.

The historical town of Hanover at the end of the 19th century served as the architectural blueprint. The genesis of the project: how this original and astonishing came true. The two cities have been in close contact and discussion for over ten years. Once approved, only 21 months passed between the laying of the cornerstone and the official inauguration of the ambitious 370-million-euro project. “Hanover Street” is the main traffic route designed as a pedestrian zone. In the small neighborhood a colorful mix of apartments, offices, restaurants, cafés and shops were established with a special emphasis on quality products “Made in Germany”.

As an example, to ensure a genuine replica of the site, a scrupulous and attentive research was carried out in order to select the most authentic materials coming from the best manufacturers like Feldhaus Klinker, Germany’s oldest family owned brick factory (established in 1857).

This really contributed to propose a quality and respectful copy of the original city offering an authentic atmosphere for business people and tourists in the Central Chinese city.

www.feldhaus-klinker.de





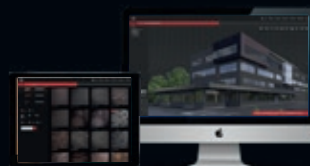
KLINKERWERK B. FELDHAUS

GERMANY'S MANUFACTORY FOR BRICKS SINCE 1857



Architecture: RhineScheme GmbH, Photo: JP Photography, Beijing

Further information as well as the brick-customizer
can be found online: www.feldhaus-klinker.de



Archi-World® Academy 2017-2019

With over 1,300 students in architecture coming from all over the world, the fourth edition of Archi-World® Academy confirmed once again its attractiveness among the future generation of architects.

**ARCHI-WORLD®
ACADEMY** Powered by
BAU 2019
GLOBAL

We would like to deeply thank BAU Munich (co-organizer of the event) for having been the perfect partner during this edition.

A warm thanks also goes to the jury members for their time and dedication as well as to the 1,200 schools in architecture who supported this event.

Archi-World® Academy represents an incredible tool allowing winning students in architecture to live a real working experience which will lay the foundations of their future career. It also represents a showcase of the amazing talent expressed by the participants.

As tradition, the awarding ceremony took place in Munich during BAU trade fair on 16 January 2019 in the presence of the jury members and the winning students. It started with a round table lead by moderator Ronald Kern with a series of questions and answers to jury members in accordance with this year's competition topic 'Building in Smart Cities'.

www.awacademy.org

Archi-World® Academy 4th edition 2017/2019 jury members:

- ① Mr Branimir Medić - de Architekten Cie - Amsterdam
- ② Mrs Lone Wiggers - C.F. Møller - Århus
- ③ Mr Sebastian Moreno-Vacca - A2M - Brussels / New York
- ④ Mr Gerhard Landau - Landau + Kindelbacher - Munich
- ⑤ Mrs Stéphanie Ledoux - AW2 - Paris
- ⑥ Mr Nico Engel - Beng Architectes - Luxembourg
- ⑦ Mr Philippe Van Goethem - SVR-Architects - Antwerp
- ⑧ Mr Renato Rizzi - Renato Rizzi Architetto - Venice
- ⑨ Mr Ángel Luis Tendero - ALT Arquitectura - Madrid / Mexico City
- ⑩ Mr Jean-François Chevance - Archetype Group - Ho Chi Minh
- ⑪ Mr Onat Öktem - ONZ Architects - Ankara
- ⑫ Mr Viggo Haremst - Henning Larsen Architects - Copenhagen / Munich



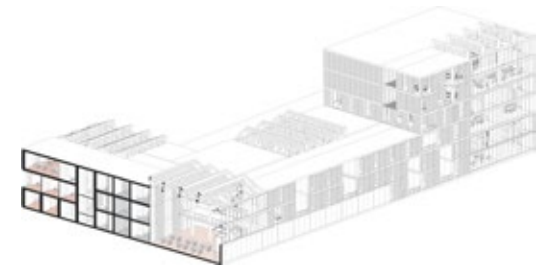
The winners

Archi-World® Academy 2017-2019



Transformation Of Tbilisi's Dilapidated Rail Yards Into A New Urban Space *Giorgi Vardanashvili, Tbilisi, Georgia*

Every year millions of tons of oil and processed oil products pass through the central districts of Tbilisi. The project area allows the development of public multi-functional recreational zone in the center of the city. This will significantly improve the city's not only the ecological environment but also its cultural status. As Tbilisi has a lack of cultural activities, the decision was made to design a cultural centre.



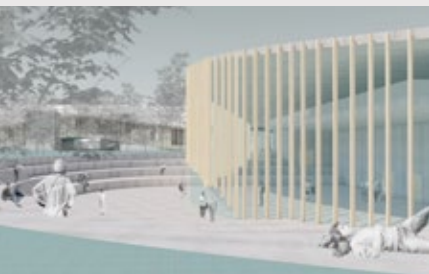
The plastic community *Margot Maeyaert, Sint-Kruis, Belgium*

The project is strongly connected with his environment, habitants and potentials. It takes into account negative factors (such as little used public space, local materials, waste, loneliness ...) and converts this into positive factors. It is a community which is reinforced by its potencies of the sea: plastic, seaweed, water and energy. The project thinks about living and working in the future, where habitants act like one group, where elderly people and temporary workers come together. The project is also about how plastic can be used as building material.



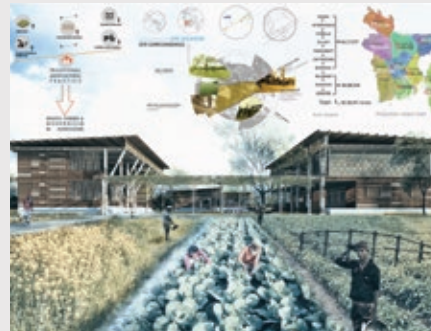
The blind and uncontrollable norm in Malevich's vertical architecture: a critical tool against the modern idea of Skyscraper *Paulina Bitrán de las Heras, Santiago, Chile*

This thesis identifies and investigates the tensions between the proposals of suprematist architecture of Kazimir Malevich and modern architecture. This is achieved through the study of the series of architektons, skyscraper-like maquettes of abstract forms. There are two types of architecture composition: horizontal and vertical. The thesis studies two specimens, one of each type of composition (horizontal architekton A11 and vertical architekton Gota). A figurative appearance is identified in the vertical architektons, since they resemble to skyscrapers or columns, while the horizontal architektons maintain the non-objective and abstract aspect proper to suprematism.



Learning Center *Marianne Machner, Leoben, Austria*

Universities are growing, for this reason the space requirement will rise. How can this be solved without moving universities out of the city? Where space is less. The Concept is based on expanding an existing structure. When Universities grow, the different departments will too. So through outsourcing the individual teaching rooms, the departments will have space to expand. The Learning Center will offer a variety of teaching and learning spaces with different spatial appearances.



'Fight for Hunger'- An institution for marginal farmer *MD Matiar Rahman, Dhaka, Bangladesh*

In Bangladesh above 30% of our farmers use handmade tools and equipment for cultivation. Most of our labor force is illiterate practicing traditional agricultural pattern. The project is a proposal for an institution fostering agriculture for a local community. Main component of the concept is our large labor force. Aim is that the local community will learn by non-formal education and have the scope to work at situ. This way a number of farmers will get an income for their work while benefiting the institution as well.

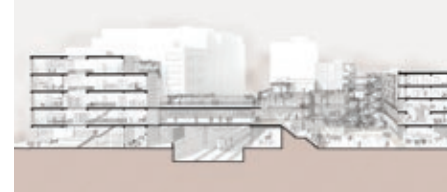


Arts & Specyacles Center 'Cinco Senores'
Ricardo Alejandro Sánchez Hernández, Mexico City, Mexico

The abandoned mines in Pozos withhold an untouched potential that could have a positive impact on the development of the local economy. The project is named "Arts & Spectacles Center: Cinco Señores" and will become a complex of both private and public cooperation that will include in its program spaces for arts such as music, theatre, painting, gastronomy and social gathering and social celebrations. A project of this nature would serve as a regional attraction seeking many benefits for Mineral De Pozos.

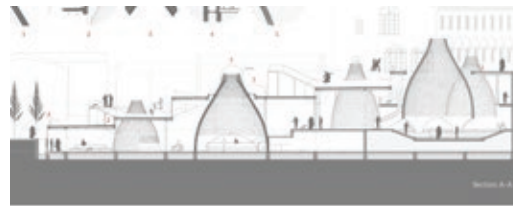
New creative community in Poblenou
Francesco Ogliengo, Turin, Italy

The project addressed the question of how to plan and design a new environment in Poblenou, Barcelona, that can positively affect the social cohesion between the existing communities and emergent creative initiatives by carefully creating productive collective spaces. The proposal is to create a network of coworking, making spaces and public facilities connected by a sequence of collective spaces. This intervention encourages people to bring the cooperative and collaborative culture back to the city.



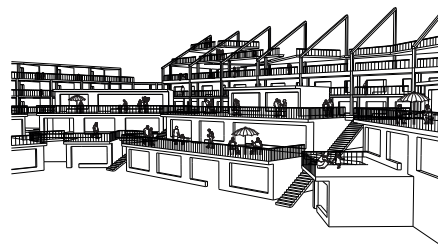
Living with the Infrastructure
Bologna Center of Architecture
Ömer Faruk Ağırsoy, Ankara, Turkey

The effects of urbanization and continuous cultural shift increase the ecological footprint of cities. This project aims to tackle this issue and halt this negative cycle of expansion through filling the urban gaps and rejuvenating the reformist/avant-garde "nature" of the city by creating an "alternative infrastructure".



Road to integration
Vytran Ngo, Milan, Italy

The inhabitants of Lodi are 45.000; their composition has been deeply modified since the early 2000s because of the arrival of a huge number of immigrants. The city, attentive to the new needs stated by its community subscribed six years ago an agreement aimed to spread an intercultural dialogue and promote among the citizens the positive value of the cultural multiplicity. Designing a new intervention that meets the requirement of cultural connection, physical spatial connection, preservation to the old cloister and historical context is the aim of the project.



Stadium District
Hubert Mikołajczyk, London, United Kingdom

Contemporary cities are experiencing a growing problem of rapidly ageing and abandoned buildings. The aim of the project is to propose the type of building facing problems mentioned above. The project assumes turning a beach volleyball stadium for Olympics Games in 2032, which are likely to be held in Mumbai, into multifunctional commercial and residential building.



COLIVING. New housing typology and prospects of its introduction to Poland

Przemysław Chimczak, Warsaw, Poland

Coliving is a new type of urban living. It is a type of inhabitation aimed mainly at young people looking for an housing alternative. In return for limiting private parts to a minimum, tenants gain access to extensive common areas and a range of services. An important element of the coliving is full service of the building by the operator.

The project aims to research in detail the typology of this new housing form and prospects of its introduction to Poland.

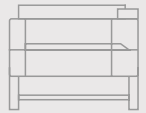


Congress Hall
Yana Ponomareva, Ekaterinburg, Russia

What is smart city and how to reach this status?

First of all, city is the citizens. People should get to know more about modern technologies, how they can be integrated in their daily life. For this purpose, the congress hall was designed. It is a great platform to start popularization of smart technologies: international exhibitions, events, conferences and competitions could be held there.

Discover EPSON's new **T-Series** Wireless Printers especially designed for architects, designers and engineers



Today we live in a fully connected and digital world.

Over 90% of the documents are sent digitally, architecture offices are printing less and less (for ecological and or quickness reasons) but when it comes to producing high quality presentations in large format it becomes essential for professionals to benefit from a fast, reliable and high quality printer.

After a methodical and comprehensive survey involving all types and sizes of architecture firms Epson comes out with a new range type of printers responding to the architects needs: the **SureColor T3100** and **T5100** large-format printers.

SureColor **T3100** and **T5100** offer high-speed, precision and reliability in ultra-sleek, compact design for engineering and architecture communities.

The **SureColor T3100 24-inch desktop printer** and the **SureColor T5100 36-inch floor-standing printer** mark Epson's expansion of the T-Series product line to the low-to-mid-range CAD printer market, the wireless printers feature a new clean and compact design coupled with the reliable printing performance inherent in Epson's technical solutions.

Whether printing blueprints, line drawings, signage, or classroom posters, the **SureColor T3100** and **SureColor T5100** will assist professionals across a wider range of segments including architecture, engineering, CAD, GIS, education, corporate, home and small office users.

The unique auto-switching functionality enables the printers to swap between large format roll paper and A4/A3 size paper, without users having to touch the printer, ideal for small companies that have multi-purpose print requirements in a limited workspace.

Discover here the innumerable features and advantages of the SureColor T-Series Printers.

The SureColor T3100 24-inch desktop printer and the SureColor T5100 36-inch floor-standing printer deliver a range of features designed to help industry professionals increase productivity, including:

- Fast print speeds – The SC-T3100 and T5100 produce accurate A1/D-size prints in 34 and 31 seconds, respectively.
- Easy to operate – A large, intuitive 4.3-inch LCD color touchscreen simplifies print tasks.
- Compact, clean design – Ultra small footprint and sleek, minimal design enhances workspace.



- Replace ink less often – High-capacity cartridges, up to 50ml colour and 80ml black.
- Print from virtually anywhere in the office – Integrated wireless and Wi-Fi Direct connectivity allow for easy printing from tablets, smartphones and more.
- High-performance – PrecisionCore MicroTFP printhead offers Precision Droplet Control for outstanding clarity, and commercial-grade reliability with Nozzle Verification Technology.
- Durable, vibrant prints – Next-generation UltraChrome XD2 archival pigment ink technology produces brilliant color and crisp lines.
- Versatile media handling – Accommodates rolls up to 24- and 36-inches and sheets up to 11 x 17 inches through the Auto Sheet Feeder with auto switch, as well as cut-sheet papers up to A1 (24") or A0 (36").
- Precise, sharp detail – Print blueprints, line drawings, posters, and more up to 2,400 dpi.
- Easy set up – Get up and running out of the box in rapid time.

Affordable Versatile Compact

Introducing the latest generation of Epson technical printers. Boasting the quality you expect in a compact design at a low TCO, T-Series models deliver stunning prints in fine detail time after time.

www.epson.eu/technical-design



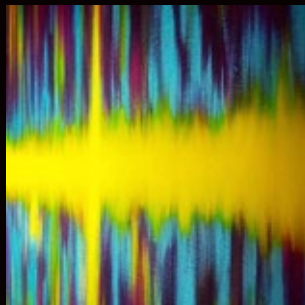
EPSON®
EXCEED YOUR VISION



Allard



DIANA ALLARD - CONTEMPORARY ARTIST



WELL-BE-ART.com



Panelox, creating more depth in your facade

Alumet can create a visualisation in aluminium by anodising the sheets twice. The image can be anything, from a realistic photo to a unique design. It's also possible to use one of the designs Alumet has created. There are 24 colours available, all made by depositing metal salts in the pores of the

anodizing layer. Therefore all the colours are colour-fast and the layer is low-maintenance. That means the colour will not suffer fading from sunlight, while the aluminium's metallic look is preserved.

This year the first Panelox project in the Netherlands starts construction. OurDomain is a 70-metre- high residential tower in the centre of Rotterdam. The facade will be double-anodised and etched with a design by Alumet, in the colours AluBronze01 and AluBronze02. The anodizing layer will have a life expectancy of more than 40 years in outdoor exposure. Would you like to see a Panelox sample? Contact us at info@alumet.nl

www.alumet.nl/en/panelox

B:hard



B:hard, the new classic wood floor for special occasions

Using a patented method, B:hard applies a wood powder-coating over the wood top layer. This results in a long-lasting, hardened and durable floor. B:hard is a must everywhere where wood flooring will experience heavy use. For living rooms, dance schools,

classrooms, offices, hotels, public or retail spaces.

It is also suitable for under floor heating, can be laid quickly and easily and is resistant to burn marks from cigarettes (up to grade 4). In impact testing it guarantees better hardness than ceramic tiles or laminate floors. B:hard received Euroclass Bfl- s1 classification according to the European norm EN 13501-1.

Despite the use of modern technology, B:hard is a 100% natural product, PEFC ISO 14001. Wood from forests cared for and managed on sustainable lines gives you the feeling of having a piece of nature within your own four walls.

www.bhard.be



Fichet Serrurerie Bâtiment presents the FOXEO BN

This is an armoured doorset designed to meet the needs of the new housing construction market in Belgium. Benefiting from the expertise of the inventor of the armoured doorset and the guarantees of the FICHET safety products, the FOXEO BN apartment doorset meets the requirements of the Belgian residential market in terms of safety, aesthetics and simplicity of

installation, while offering a particularly competitive solution for original equipment of new apartments.

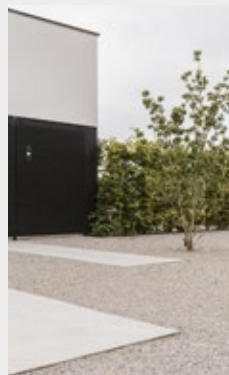
Certified class 3 burglar proof (EN 1627-1630), FOXEO BN is equipped with a 3-point lock and a Euro-profile cylinder. It also complies with the very strict new fire resistance requirements in application in Belgium (EI1 30 classification), while ensuring the thermal and acoustic comfort of the apartment.

For harmonious integration, FOXEO BN is available in a range of 33 RAL colours and 7 wood shades for the leaf.

www.fichet-serrurerie-batiment.be



GRAVELART



Gravelart - We aim to create the most beautiful outdoor spaces!

Gravelart is a Belgian supplier of garden and soil products. Our carefully selected range of products offers solutions for (urban) gardens and outdoor projects. In addition to our extensive range of pond products, edgings and water-permeable solutions for car parks, terraces and driveways, we also offer a comprehensive line of decorative gravel. With our Gravelart Exclusive Range, we bring together the most exceptional types of gravel that are only available at Gravelart.

As company, we strive towards a better future and that is why we offer innovative garden and soil products.

We want you to be able to fully enjoy the outdoor living experience. We believe in making a difference in the world in which we build for future generations and we aim to leave our planet in better condition than we received it.

www.gravelart.be



THE FADE® Acoustic plaster system by Icoustic

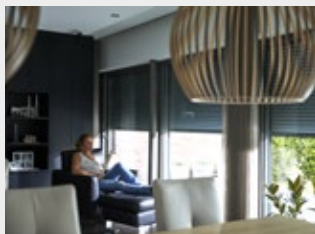
The fade® Acoustic Plaster System is a seamless, high-quality plastering system that absorbs unwanted noise in a wide range of environments. As an acoustic solution applied to walls and ceilings, its highly absorbent qualities allow for

optimum acoustic control in large, commercial spaces. An ultra-smooth, fine grain super white finish. Sanded or trowelled to achieve a highly aesthetic acoustic solution. Any other color available on request.

The seamless acoustic plaster can be installed on plasterboard, concrete or timber substrate.

- Test data sound absorption NRC/AW up to: 1,0 (Class A)
- Class A Fire Testing as per the ISO EN 13501 2007: A2s1d0
- Microorganisms cannot grow in the acoustic plaster system
- The system is odor free and highly resistant to humidity and UV-exposure

www.icoustic.eu



Building airtight with roller shutters and vertical screens

Sun protection was always one step ahead of roller shutters when it came to calculating the energy performance of buildings. Whereas ZipX@Zero already made it possible to incorporate a screen into a cavity wall without

touching the inner wall, such a solution did not yet exist for roller shutters.

That is where Wilms' ShutterX® comes in. It allows you to offer completely airtight roller shutters. The inner wall no longer needs to be pierced and the roller shutter remains invisible from the outside. Even better, we replace the insulation material that is removed to incorporate the roller shutters by a composite profile behind the box. This profile compensates and even enhances the insulation value. The profile also allows fixing the window to the inner wall from the top. This new innovation is also available with the ZipX@Zero.

www.wilms.be



Interalu & LCC-Plafonds have an extensive range of ceiling panels in aluminium and steel

We have created a total concept combining the flexibility and modularity of our climate and passive ceilings with the integration of following techniques:

- high-performance acoustic absorption
- customized lighting
- ventilation for an optimal climate
- integration of smoke detectors and motion sensors

Furthermore, the possibilities of our ceilings with closed or open joints are multiple:

- contemporary & aesthetic design
- versatile & flexible ceilings that fit into most architectural concept
- fire safe
- no maintenance costs
- environmentally friendly

The panels are available in different widths from 30 mm (BL-ceiling) to 600 mm (XL-ceiling). They are always tailored to your project.

www.lcc-plafonds.be / www.interalu.eu



Neighbours®

Neighbours® is a garden wall system/screen that stands out through its sleek design and for which Outdoor Wood Concepts® developed a patented assembly system that can hardly be detected by the naked eye. Thanks to this

system, the beams can be installed only 40 centimeters beneath the ground. Just above the ground, Neighbours® is available in heights up to 3 meters. The system satisfies the applicable standards with regard to wind load, steel constructions and anchoring. What also makes Neighbours® unique is the wooden semi-transparent screen through a smart positioning of the wooden beams. Neighbours® can contribute to a sleek design guaranteed to provide both privacy and contact with the surrounding environment. It is available in Sustainability Class I tropical hardwood in heights of 1.80 or 3 meters.

www.outdoorwoodconcepts.be



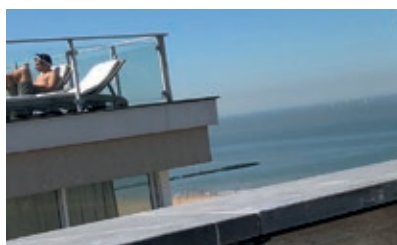
PLANTERS

FIRE PLATES

WATER FEATURES

PONDS

HERBS & VEGETABLES CONTAINERS



- Discrete luxury
- Respect for handmade products
- 100 % made in Belgium
- Interior & exterior applications
- Corten Steel and Stainless Steel
- Standard sizes or bespoke
- Craftmanship & Personal Contact



WALFILII.COM



+32 (0)3 605 18 84

the
ORIGINAL
MADE IN BELGIUM
AUTHENTIEK & KWALITEIT

Books

Steven Holl: Seven Houses

Written by Steven Holl,
Contribution by Philip Jodidio

Steven Holl Architects is pleased to present Steven Holl: Seven Houses, with contributions by Philip Jodidio and published by Rizzoli. Through new texts, watercolors, and more than 100 photographs, the book offers a close look at seven residences designed by Steven Holl Architects. In addition, the book includes Holl's essay "Luminist Architecture," which explores the importance of light, natural landscapes, and spatial energy. This volume features seven of Steven Holl Architects' residential works, including two new homes finished in 2017. Despite their varying locations and scales, the houses are connected in their use of natural light, material, and detail. Viewed as a collection, the projects exemplify the luminist qualities of Holl's work, inspired by the light of New York's Hudson Valley.

Publisher Rizzoli / English

208 pages / 125 color photographs
and illustrations
\$75.00 U.S.
ISBN 978-0-8478-6159-0
hardcover / format 10" x 10"
[www.rizzoliusa.com/
book/9780847861590](http://www.rizzoliusa.com/book/9780847861590)

An icon, reborn

Restoration and re-use Tombeek
sanatorium

This book is about the restoration and re-use of the Tombeek sanatorium, an iconic architectural pearl from the interwar years in decline for many years. Showing the utmost respect for this protected monument, SVR-ARCHITECTS

researched which parts of the building could still be saved from their pitiful fate. The purpose was to create a picture that was as accurate as possible, and to breathe new life into the monument. Implementation took 30 months, almost twice the original construction time.

Publisher SVR-ARCHITECTS / Dutch

184 pages / €37.00 (excl. shipping costs)
ISBN 9789090307091
hardcover / format 24.5x24.5 cm
order through
martine.gysen@svr-architects.eu

Vincent Van Duysen - Works 2009-2018

Vincent Van Duysen

Vincent Van Duysen's architecture is serene, some would even say sublime. This second monograph in the Thames & Hudson series introduces projects from the past 10 years. Taken together, the two books represent three decades of professional activity. The architect's evolution over time is apparent, revealing that his innate principals have remained perfectly intact while he continues to develop a high level of maturity and sophistication in the execution of projects both in Europe and internationally. Through creating timeless places and spaces, Van Duysen's reputation as an artful architect is well deserved. His uncompromising commitment to the integrity of design is here for all to discover.

Publisher Lannoo / Dutch

English issue is available through
publisher Thames & Hudson

320 pages / €49,99
EAN 9789401455787
hardback / format 310x250
www.lannoo.be/nl/vincent-van-duysen-1



Using a patented method, B:hard applies a woodpowder-coating over the wood top layer. This results in a long-lasting, hardened and durable floor. B:hard is a must everywhere where wood flooring will experience heavy use. For living rooms, dance schools, classrooms, offices or retail spaces. B:hard: The new classic wood floor for special occasions.

www.bhard.be
info@bhard.be

LoFra Projects BVBA

Venderstraat 5B
BE- 3640 KINROOI

+32 89 70 16 62



MAKE IT WONDERFUL

FRANKE



THE NEW FRANKE BOX CENTER

In a well-organised kitchen, every movement you make is effective. The Box Center is the epitome of efficiency in this respect. The most important kitchen accessories are neatly stored in the compartment bowl – right where you need them for preparing food.

www.franke.com/be

Competitions

Design competition for “Cetățuia Hill” urban ensemble in Cluj-Napoca

The Competition's purpose is finding the best solution for redesigning the lands within the “Cetățuia” urban ensemble in Cluj-Napoca Municipality, as a start to capitalizing the entire urban ensemble and integrating it in the larger leisure system of the city.

The assignment procedure shall be carried out by means of the Design Competition, which is carried out in one phase, whose finality is the assignment of the design contract for this objective, opened for Romania, the countries of the European Union, the European Economic Area and the Swiss Confederation.

► **Submission deadline 24/06/2019 (16h)**

More information www.oar.archi/en/concursuri/cetatuia-hill

Site Mausoleum international ideas competition

The Site Mausoleum, located on a prominent landscape, is a place of memory and solitude, a tranquil atmosphere for introspection and remembrance; it is an intimate journey through time and silence, offering visitors a unique experience within the immensity of the place. This international one-stage architecture ideas competition invites all architecture students, young architects and young professionals with a degree in architecture studies (≤ 40 years old) to develop and submit compelling ideas for the design of a Site Mausoleum located in the Jaspe Quarry, 'Serra da Arrábida', Portugal.

► **Registration deadline 17/06/2019**

Submission deadline 29/06/2019

More information www.arkxsite.com

Plastic Monument 2019

A competition of ideas aiming to create an itinerant architectural installation. It will travel all around the world to raise awareness about the impact of plastic waste on our planet.

A cash prize + realization of the 1st Prize will be awarded to winners selected by a well-renowned jury made of, among the others, Kengo Kuma, Carlo Ratti, Italo Rota, Mandy Barker, Maria Cristina Finucci.

The goal of the competition will be creating an itinerant architectural installation to be the standard-bearer of the fight against plastic waste. It can be an icon of eco-sustainability or a statement against global pollution. The aim of the installation will be guarding the symbolic sites of our civilization (squares, museums or monuments). In order to ensure a contextualized design aiming at proposing feasible solutions, there is a list of the main constraints and features to take into account for the design.

► **Registration deadline 07/07/2019**

Submission deadline 10/07/2019

More information

www.youngarchitectscompetitions.com

Baghdad's Al Umma Park - Dewan Award for Architecture 2019

Dewan Award for architecture (est. 2018), is the newest award to be established as part of the Tamayouz Excellence Award program of championing and celebrating the best of architecture in Iraq and around the world. The Dewan Award for Architecture aims to empower young architects around the world while addressing local challenges in Iraq. This year, participants are asked to redesign Baghdad's central park; Al Umma as a green lung in the capital's dense urban fabric, creating an optimistic vision for the future and a safe space for public gatherings and socialising. Proposals should reflect the legacy of the park and integrate the existing artwork (the Freedom Monument, the mural and the statue) within its redesign.

The park should have: ❶ underground level/levels that include[s] a connection to the proposed Baghdad Metro*, and ❷ Al Umma Center, which would mark the historical events the park has witnessed. This centre can be located anywhere on the site, but we encourage it to be situated on a lower level (to keep the surface as green as possible) with connections to the metro station and other services.

The Dewan Award is an open International Ideas Competition, therefore, practicing architects, students, engineers, planners and designers are invited to participate in this award.

► **Registration deadline 15/08/2019**

Submission deadline 20/08/2019

More information www.dewan-award.com

BATiMAT

SINCE
60 YEARS

Building bridges between professionals and innovation

The best way to discover
and experience **innovations**
in the construction industry

- 1,800 exhibitors
- A record number of
world-exclusive innovations
- Inspiring conferences
- Many demonstrations



4 > 8 NOV 2019
PARIS NORD VILLEPINTE

BATiMAT le
IDÉOBAN mondial
INTERCLIMA du bâtiment

Organised by



More info at www.batimat.com

digitalBAU

Trade Fair for Digital Solutions in the Construction Industry
February 11–13, 2020 - Cologne

BIM, Smart homes, dedicated building IT solutions, Start-ups and more...

See for yourself the digital solutions shaping the future of the building industry across the value-added chain. Be inspired by the latest innovations and future technologies at the largest trade fair for digital solutions in the construction industry.

- Largest construction software event north of the Alps
- Around 150 exhibitors, including software companies, digital solution providers and start-ups
- Around 20,000 m² exhibition space
- Interesting and varied supporting program
- Perfect addition to BAU



Messe München GmbH

info@digital-bau.com

Tel. +49 89 949-11308



digital
BAU 

www.digital-bau.com