

# ARCHI-NEWS.EU

2024 #56





## EDITORIAL

By Jacques ALLARD *Chief Editor*



We are excited to present the newest issue of our **ARCHI-NEWS** magazine.

Dear readers,

With great pleasure and anticipation, we extend our heartfelt greetings and present to you the latest edition of ARCHI-NEWS, your exclusive gateway into the captivating world of architecture. As you delve into the pages of this meticulously crafted magazine, brace yourselves for a mesmerizing journey through a plethora of architectural masterpieces that promise to fuel your imagination and spark your creativity.

This edition of ARCHI-NEWS takes immense pride in showcasing a diverse range of breathtaking architectural projects, spanning the grandeur of new residential homes to the cutting-edge design of non-residential leisure and public spaces.

A Special Homage to Sir Philippe Samyn.

In this 2024 edition, ARCHI-NEWS pays a sincere tribute to the internationally renowned architect and engineer, Sir Philippe Samyn. Immerse yourself in the visionary world of Samyn and Partners architects and engineers as we unveil five distinct projects that epitomize the brilliance and innovation synonymous with Sir Philippe Samyn's name.

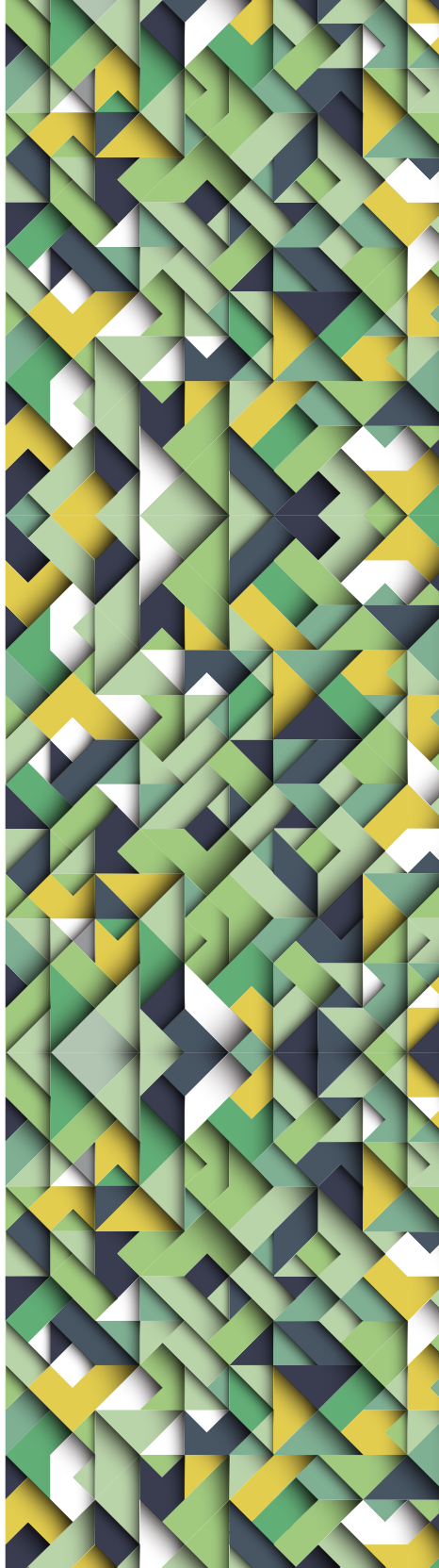
Another noteworthy highlight in this edition is the extraordinary SILT project in Middelkerke. Here, the fusion of building and landscape seamlessly integrates into a fluid harmony of organic shapes and sustainable materials, mirroring the coastal hues that surround it.

As you flip through the pages, witness the flawless union of aesthetics and functionality, the incorporation of sustainable materials, and the innate harmony between form and purpose. Each project unfolds as a visual narrative, expertly captured through the lens of skilled photographers who breathe life into these architectural marvels.

Embark on a journey of architectural excellence, and let the beauty of design transport you to new realms of inspiration.

Warm regards,

Jacques ALLARD  
Chief Editor



## CONTENT

- 02 ▶ **EDITORIAL** By Jacques Allard
- 03 ▶ **CONTENT**
- 03 ▶ **COLOPHON**
- 04 ▶ **LEO TEN WOLDE & ZWARTS JANSMA ARCHITECTS:** SILT Middelkerke
- 08 ▶ **SAMYN & PARTNERS, ARCHITECTS AND ENGINEERS:**
  - 10 • EUROPA - Headquarters of the Council of the EU
  - 12 • Walloon branch of reproduction forestry material
  - 14 • Maison administrative de la province de Namur
  - 16 • Clinique Sans Souci, Jette
  - 18 • Place MaTuVu, Knokke-Heist
- 22 ▶ **JEAN BAPTISTE PIETRI**
  - 24 • La Capitainerie, La Londe-les-Maures, France
  - 26 • MaisonP, Le Puy-Sainte-Réparate , France
- 30 ▶ **ARA-ARCHITECTEN:** office space & appartments in Helchteren
- 34 ▶ **CAS ARCHITECTEN:** Villa in Meetjesland
- 38 ▶ **TENARCHITECTS: HOUSE DC:** Kalmthout
- 42 ▶ **STUDIO FARRIS:** residential project in Zottegem
- 46 ▶ **ARCANE ARCHITECTES & CARDIN JULIEN** Scientific Culture, Grenoble, France
- 50 ▶ **K2A & ARTBUILD ARCHITECTS:** Wooh's Headquarter, Nivelles
- 54 ▶ **ERIC OLIVIER ELECTRIC** industrial building, Nivelles
- 56 ▶ **VERMILION ZOE:** "YIN XI" Teahouse, Shanghai, China

## COLOPHON

Dennendreef 8a, B-3721 KORTESSEM / Tel. +32 11 37 56 13 Fax +32 11 37 56 07  
www.archi-europe.com / press@archi-press.eu

- ▶ **LAYOUT** Vinckx Grafische Vormgeving
- ▶ **PUBLISHER** Jacques Allard
- ▶ **CHIEF EDITOR** Jacques Allard
- ▶ **EDITOR** Maxime Jonvelle
- ▶ **GUEST EDITOR** Julie Allard

## COVER



SILT Middelkerke

A Graceful Hub in Middelkerke's architectural landscape.

**Leo Ten Wolde & Zwarts Jansma Architects**

*Photo credits © nautilus\_consortium*

**ARCHI-EUROPE GROUP®**  
www.archi-europe.com



Member of VJV



VLAAMSE JOURNALISTEN VERENIGING

Copyright 2024 Archi-Europe nv / ALLARD BV ARCHIWORLD  
all rights reserved.





# Leo Ten Wolde & Zwarts Jansma Architects

## SILT: A Graceful Hub in Middelkerke's Architectural Landscape

Silt, Middelkerke's latest architectural gem, unveils its doors, marking the culmination of over two years of meticulous construction. Crafted by the visionary architect Leo Ten Wolde in collaboration with Zwarts Jansma Architects from Amsterdam, Silt transcends the conventional casino paradigm.

It seamlessly integrates a bespoke event venue, a distinctive restaurant concept, a discreet gaming area, and a four-star hotel, all nestled within a timeless structure.

### Embedded in Middelkerke's DNA

Selected through a meticulous process, the Nautilus construction team, featuring Ciril as the developer, ZwartsJansma (architecture), DELVA (landscape architecture), OZ (casino and hotel design), and others, secured the project.

Mayor Jean-Marie Dedecker praised the project's alignment with Middelkerke's DNA – architecturally fantastic, urbanistically thoughtful, and financially sound. The site, where Middelkerke's first casino emerged in 1891, has evolved over the years, closing in 2017 but paving the way for a new architectural venture.

### Protective Dunescape

Silt revolves around clear spatial principles, shifting the Epernaysquare towards the sea through a unique dunescape. This design enlarges public space, fortifies the seaside, and introduces a green welcoming square on top of the dune. The new casino seamlessly integrates into the dunes, with the hotel tower acting as a distinctive visual beacon, especially at night.

### Symbiosis of Landscape, Exterior, and Interior

The building and landscape form a fluid integration of organic shapes and sustainable materials, mirroring the coastal hues. This synergy extends into the interior, reflecting simplicity, softness, and a connection with nature in both color schemes and lighting design.







### Local Empowerment

Beyond its architectural prowess, Silt contributes to Middelkerke's economic and social growth, creating a new focal point in the city center. Mayor Dedecker anticipates the casino becoming a catalyst for tourism and local businesses.

### Expanding Horizons

Silt introduces new space, doubling the area for pedestrians and cyclists while offering underground parking for easy access. The project extends beyond the casino, housing a diverse range of leisure functions, including an event venue, a four-star hotel, and Taste Silt, a unique gastronomic concept restaurant.

### In Conclusion

Silt, more than just a casino, stands as a testament to architectural finesse, historical homage, and community development. Its name, inspired by the sediment that binds various elements, symbolizes its role as a unifying force in Middelkerke's maritime surroundings. ▶

▶ For more information: [www.silt.be](http://www.silt.be)  
Photo credits © nautilus\_consortium



Leo Ten Wolde & Zwarts Jansma Architects



# Philippe Samyn



© archiweek-urban

**In the world of architecture, Sir Philippe Samyn, from the Brussels based Samyn & Partners, Architects and Engineers, emerges as a world-class architect but also engineer.**

With an illustrious career spanning already several decades, Philippe Samyn has become synonymous with innovation, sustainability, and timeless design.

In this edition of Archi-News, we shine the spotlight on this visionary architect and engineer and explore some of his remarkable contributions to the field.

## Early Life and Education:

Born and raised in Belgium, Philippe Samyn developed an unwavering passion for architecture from a young age. After graduating as a civil engineer from the “ULB” in 1971, Samyn embarked on a journey of continuous education to expand his knowledge and skills. In 1973, he obtained a Master. Sc. from the Massachusetts Institute of Technology as well as graduating as urban planner from the ULB, broadening his perspective on engineering, and nurturing his creative approach.

Philippe Samyn’s thirst for learning led him to complete a postgraduate degree in business administration at the Solvay Institute and to earn his degree as an architect at “La Cambre” in 1985. In 1999, he earned a doctorate in applied sciences from the University of Liège, solidifying his expertise in the field and establishing himself as a true architectural and engineer scholar.

## Design Philosophy:

At the core of Philippe Samyn’s design philosophy lies a deep emphasis on sustainability and environmental responsibility. **His projects seamlessly integrate with their surroundings, harnessing the power of natural light, ventilation, and energy-efficient technologies.**

Philippe Samyn’s commitment to sustainable design has earned him numerous accolades and recognition within the architectural and engineering community. His ability to create spaces that harmonize with the environment while fulfilling functional needs showcases his visionary and forward-thinking approach to architecture.

## Notable Projects:

Throughout his ongoing illustrious career, Philippe Samyn has been involved in a multitude of groundbreaking projects that have left an indelible mark on the architectural landscape. Here are just a few examples:







© Marie Françoise Plissart

## 1° EUROPA - Headquarters of the Council of the EU

Located in Brussels, Belgium, this impressive project was a collaboration between Philippe Samyn and PARTNERS architects & engineers as lead & design partner, with Studio Valle Progettazioni architects, and Buro Happold engineers. The 53,815 sqm superstructure seamlessly blends architectural design, interior design, landscaping, and structural engineering. Completed between 2005 and 2016, this project stands as a testament to Samyn's ability to create **functional and visually stunning spaces** that inspire awe and admiration.



© Marie Françoise Plissart



## 2° Walloon branch of reproduction forestry material

Nestled in Marche-en-Famenne, Belgium, stands an extraordinary structure crafted from wood and glass—a captivating bubble with a distinctive frame of gracefully curved spruce wood. This architectural marvel not only serves as a testament to the potential of native wood in construction but also **actively plays a role in addressing climate change**.

Acting as a promotional showcase for sustainable building materials, the structure contributes significantly to the preservation of natural heritage by fostering high genetic diversity. With a spacious expanse of 1,144 sqm, this unique creation, completed between 1992 and 1995, goes beyond its aesthetic allure, embodying a commitment to ecological and architectural innovation.





### 3° Maison de la culture de la province de Namur

The concept revolves around the 'third place,' where the public actively participates in a natural and meaningful cultural experience. The Delta provides spaces for creativity, idea sharing, and community building. The interior encourages conviviality, with open spaces like the lobby, panoramic garden, and main hall foyer available for art practice and sharing. This project exemplifies Samyn's ability to create spaces that foster a **sense of belonging and inspiration.**







© Quentin Olbrechts

## 4° Clinique Sans Souci

Situated in Jette, Belgium, this medical facility covers an area of 9,199 sqm. The project, spanning from 1993 to 2024, exemplifies Samyn's ability to create **spaces that prioritize the well-being** of patients while incorporating sustainable design principles. The design of the facility promotes healing and comfort, ensuring a positive environment for patients and healthcare professionals alike.



# 5°Place MaTuVu

Located in Knokke, Belgium, this project was completed in 2023 and covers an area of 2,254 sqm. Samyn's design for this space demonstrates his skill in crafting architectural elements that seamlessly blend with the surrounding environment, creating **a harmonious and inviting atmosphere**. The technical marvel of the "ISONODE structure" of the dome he invented at MIT in 1972, where there are no load-bearing structures, showcases Samyn's innovative thinking and engineering prowess.

© Quentin Olbrechts



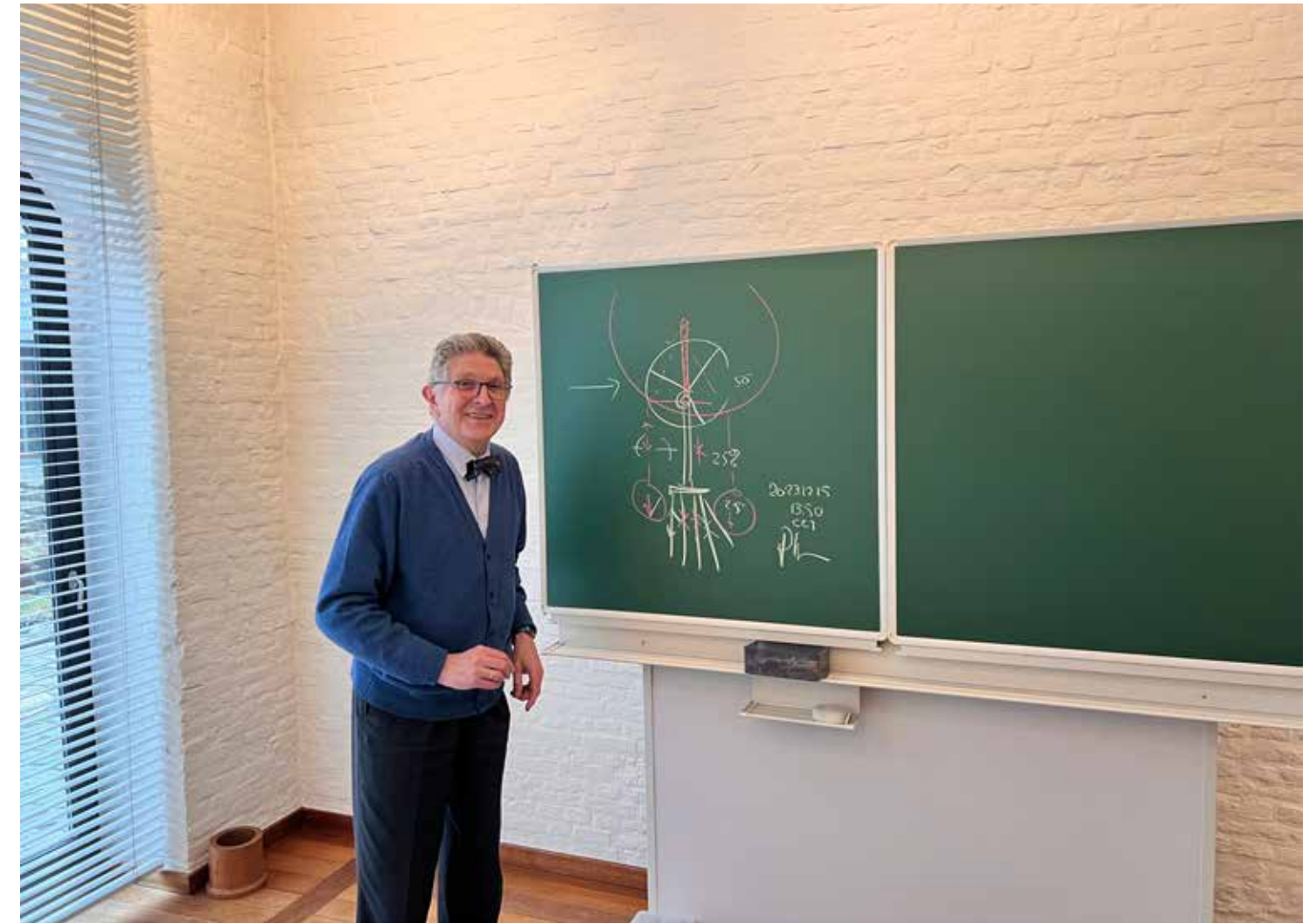


### Final Thoughts:

Philippe Samyn's unwavering commitment to sustainability, his innovative design approach, and his ability to seamlessly integrate architecture with its surroundings have solidified his status as a true visionary in the field. His notable projects showcase his ability to create functional, visually stunning, and environmentally conscious spaces that stand the test of time.

Philippe Samyn's contributions have not only shaped the architectural landscape but also inspired a new generation of architects to **push boundaries and think beyond convention**. ▶

▶ For more information: <https://samynandpartners.com>



© Jacques Allard





# Jean Baptiste Pietri

**Jean Baptiste Pietri Architectural Visionary Crafting Coastal Marvels and Hillside Harmony”**

*By Chief Editor, Archi-News*

Jean Baptiste Pietri, hailing from the southeast of France and a graduate of the École d'Architecture de Paris-Belleville, founded his agency in 2001. Based in Paris, PietriArchitectes, with a team of twenty collaborators, showcases their design prowess across diverse programs, from private residences to waterfront luxury hotels and office towers. Their projects, spanning Île de France and PACA regions, reflect a commitment to architectural brilliance and a harmonious connection with the surrounding environment.







## Project 1: La Capitainerie - A Maritime Oasis

*Nestled along the shores of the Mediterranean in La Londe-les-Maures, France, La Capitainerie emerges as a captivating architectural gem, poised against the backdrop of Fort de Brégançon and the azure Mediterranean Sea.*

### Architectural Vision and Inspiration:

The journey of La Capitainerie began in 2011, with PietriArchitectes triumphing in a design competition. Inspired by previous works in Marseille and La Seyne sur Mer, the project embodies a gentle, playful approach, seamlessly blending with the coastal landscape.

### Functional Elegance in Coastal Harmony:

Elevated a meter above ground, La Capitainerie hosts diverse functions, ingeniously distributed across three curved levels. The structure transforms into an elevated street, harmonizing with the coastal allure of La Londe-les-Maures.

### Materials Resilient to Maritime Ambiance:

Constructed from a blend of concrete, wood, and stainless steel, the design strategically tackles the challenging marine environment. La Capitainerie stands as a testament to PietriArchitectes' commitment to architectural beauty and environmental resilience.

▶ For more information: [www.pietriarchitectes.com](http://www.pietriarchitectes.com)  
Photo credits © Christian Michel



## Project 2: MaisonP - Architectural Harmony in Le Puy-Sainte-Réparate

*Nestled in Le Puy-Sainte-Réparate, France, MaisonP by PietriArchitectes is a testament to seamless design integration with nature. Positioned on a hillside, the 296 m<sup>2</sup> residence, cleverly divided into distinct entities, offers panoramic views of the Alps..*

### Contextual Design and Natural Elegance:

Divided into a garage, entry/kitchen, and bedroom/living area, MaisonP respects the site's orientation, preserving its wild beauty. An additional stone annex complements the main house, emphasizing transparency and a connection with nature.

### Architectural Composition and Provencal Influence:

MaisonP, thoughtfully composed, embraces voids reminiscent of Provencal bioclimatic architecture. Minimizing alterations to the natural slope, the project creates a harmonious blend of architecture and landscape.

### Balanced Spaces and Unique Perspectives:

The deliberate division creates a rhythmic flow, ensuring a harmonious spatial experience. An elevated annex adds depth, offering a unique perspective of the landscape. ◀

▶ For more information: [www.pietriarchitectes.com](http://www.pietriarchitectes.com)  
Photo credits © Philippe Biolatto











# ARA Architects

Refined Creativity in Helchteren, Belgium

## Timeless design and aesthetic allure.

In the peaceful Helchteren, ARA Architects' presets it's recent project, an office space with two apartments above, shines brightly. The building, an epitome of innovative design and spatial harmony, exudes aesthetic allure with carefully chosen materials, including acoustic walls made of felt and wooden slats.

Well-oriented windows provide abundant natural light, creating bright spaces ideal for both creative collaboration and individual concentration. The exterior is a timeless design with glued beige-brown nuanced facade bricks and bronze-anodized exterior joinery.

Inside, **every detail is meticulously designed** with a refined taste for aesthetics. A striking slanted wall with acoustic cladding connects the meeting area to workspaces, where a large wooden bench and designer seats form a cozy coffee or reading corner. The kitchen, bathroom access, and archive are housed in a black volume, accentuated by a subtle golden niche in the kitchen.











# CAS Architects

## Enchanting villa in Meetjesland, Belgium

CAS Architects has skillfully created an enchanting villa in Meetjesland, where the captivating landscape becomes an integral part of the living experience.

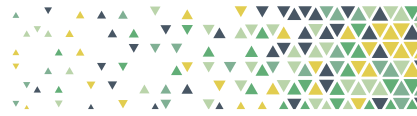
Situated in the second building line, the elongated structure establishes a **harmonious interplay between architecture and nature.**

Taking advantage of regulatory flexibility, CAS Architects strategically positioned the dwelling, resulting in a front garden that seamlessly integrates with the living space, fully realized and captivating.

The sculptural design, with its play of open and closed elements, imparts a sense of visual lightness to the dwelling, creating a captivating aesthetic.

The openness of the dwelling ensures an immersive experience from every angle, allowing the **natural surroundings to be embraced.**

The material composition, featuring concrete facade panels, glass sections, and wooden passages, generates a dynamic ambiance that perfectly complements the architectural precision.







Travertine natural stone, both indoors and outdoors, encapsulates contrast, character, and warmth, adding a touch of timeless elegance to the residence.

The seamless transition from the interior to the terrace provides a continuous connection with the surrounding landscape, allowing for a harmonious flow between indoor and outdoor spaces.

The strategic placement of the pool and garden pavilion offers two distinct atmospheres within the same property, enhancing the overall living experience. These residences, with their timeless design and **meticulous craftsmanship**, defy the passage of time, ensuring their contemporary appeal even after three decades.

CAS Architects firmly believes that this dwelling will stand the test of time, seamlessly integrating the scenery into the living space and leaving architects in awe of their accomplishment. ◀

▶ For more information: [www.cas-architecten.be](http://www.cas-architecten.be)  
Photo credits © Tim Van De Velde







2024 ▶

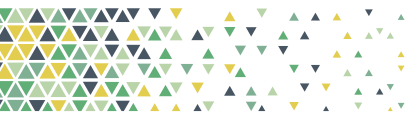







 For more information: [www.tenarchitects.be](http://www.tenarchitects.be)  
 Photo credits © Tijs Vervecken





# Studio Farris

## Collegium Zottegem, Belgium

The former 'OLV Collegium', dating from 19<sup>th</sup> century, is situated in the historical center of Zottegem and was purchased by developer, Vanhout, in 2017. SFA was selected to design the masterplan for a new residential project and a public underground parking for the city. SFA's ambition was to enhance the community's sense of belonging in relation to the site.

The new design provides a cluster of buildings that form a large green courtyard around the former collegium. A strong connection between the busiest shopping street and the new project creates a serene atmosphere to pass through to the other side of the city, while giving access to the public underground parking.

This project strives to set an example of sustainability over time. **The configuration of the project has been designed to provide a sustainable system, transcending technological solutions.** These solutions can be adapted to work within the project itself, but the architecture does not rely on it. When technological solutions advance, the project will not become outdated, allowing it to avoid demolition and reconstruction. This establishes a longer lifespan that will far outreach modern technological progress.

Collegium creates strong relationships within both the existing and future developments, while acknowledging its environmental surroundings. It aims to provide for the community by fostering civic pride and strengthening a sense of belonging. When communities and people feel a sense of belonging, they become more open to accepting the future. ◀







Studio Farris



For more information: [www.studiofarris.com](http://www.studiofarris.com)  
Photo credits © Martino Pietropoli



# ARCANE Architectes & Cardin Julien

A Contemporary Showcase for the Scientific Culture of Metropolitan  
Grenoble, France



ARCANE Architectes (France) and Cardin Julien (Canada) jointly present the innovative Centre des sciences Cosmocité, situated on the Grands Moulins de Villancourt heritage site in Pont-de-Claix, Isère (France).

Architects Jean-Yves Guibourdenche and Jean-François Julien crafted a distinctive design in collaboration with scenographer CREO, La Casemate, and the scientific community.

Cosmocité preserves the industrial legacy of the Grands Moulins de Villancourt, integrating the region's past with a modern scientific focus. The building's layout combines a translucent white volume representing the industrial past and a matte black volume symbolizing the contemporary scientific mission.

The black volume houses spaces dedicated to scientific content dissemination, including a planetarium, immersion room, and permanent exhibition hall. **The design encourages reflection on the universe's mysteries and humanity's place in the cosmos.**

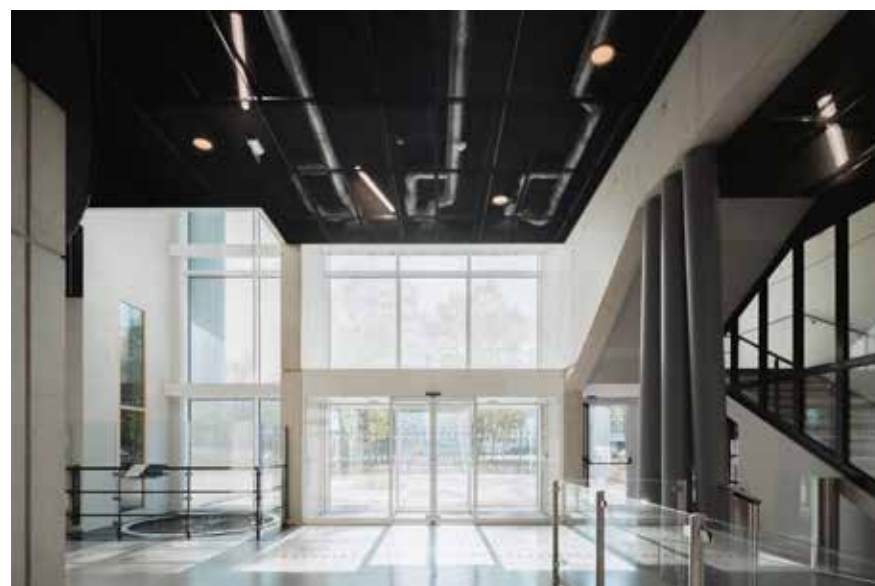
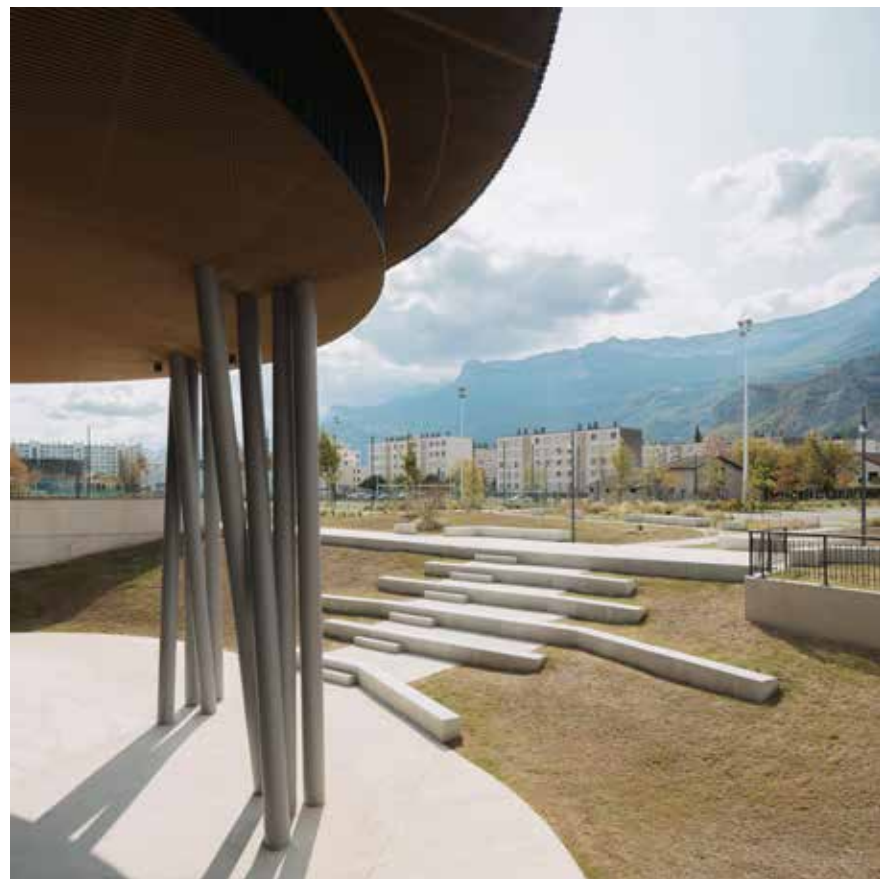
Cosmocité hosts various facilities, including an 80-seat planetarium, an immersive 3D room, a Foucault pendulum, and spaces for children, youth, and modular activities. With a capacity for 57,000 visitors annually, the facility emphasizes inclusivity.

The planetarium features a circular, inclined space with reclining seats, providing a 360° view of a semi-spherical screen. The permanent exhibition, developed in collaboration with Montreal-based studio CREO, explores fundamental questions about Earth and the universe across two floors.

The building's bioclimatic design balances energy capture and thermal control, incorporating efficient solar protection and natural ventilation. **Acoustic comfort is prioritized**, and energy efficiency is achieved through a compact construction and a high-performance envelope. Landscaping includes a stone forecourt, a garden with an outdoor amphitheater, and a preserved hundred-year-old cedar tree.

ARCANE Architectes and Cardin Julien's collaborative efforts resulted in Cosmocité, a modern marvel that seamlessly blends architectural innovation with a commitment to scientific culture. ◀





ARCANE Architectes & Cardin Julien

For more information: [www.arcane-archi.fr](http://www.arcane-archi.fr) / [www.cardinjulien.com](http://www.cardinjulien.com)  
Photo credits © Nicolas Trouillard





# K2A & ArtBuild Architects

## Crafting a Sustainable Haven for Stanley Stella's Headquarters

*In a transformative collaboration spanning 2019 to 2021, K2A and ArtBuild Architects have unveiled a cutting-edge headquarters for Stanley Stella, strategically located at a city entrance. This architectural marvel, with floor plans stretching 100 meters, showcases a blend of innovation, sustainability, and purposeful design.*

### Strategic Design, Sustainable Vision

Stanley Stella, a pioneering eco-fashion brand, entrusted K2A and ArtBuild Architects with their new headquarters. Acquiring two floors, the client envisioned free-flowing spaces adorned with sustainable materials that echo the brand's DNA. The design embraces luminosity, coziness, and conviviality, fostering a creative and collaborative work environment.

### Understated Elegance and Purposeful Connectivity

The architecture, deliberately kept elegantly "understated," serves as a canvas for Stanley Stella's dynamic clothing collections, allowing them to take center stage. A unique design element involves the removal of part of the concrete slab, creating an internal connection – a large podium facilitating interactions, presentations, and city observation.







### Bespoke Design for Creativity

From custom working tables to door handles, every detail in the headquarters is meticulously designed. This customization enhances the creative and collaborative ethos of the space, reflecting a commitment to innovation.

In crafting Stanley Stella's headquarters, K2A and ArtBuild Architects have gone beyond constructing a mere office space. They've curated an architectural narrative that seamlessly integrates sustainability, innovation, and corporate identity. This collaboration exemplifies a dedication to pushing boundaries and redefining the intersection of function and form in contemporary architecture. ◀



For more information: [www.k2a.be](http://www.k2a.be) / [www.artbuild.com](http://www.artbuild.com)  
Interior construction by WOOH / [www.wooh.be](http://www.wooh.be)  
Photo credits © Serge Brison







# Eric Olivier Architectes

Batiment industriel, Nivelles Nord



Established in 1989, Eric Olivier Architectes firm has cultivated a legacy of architectural excellence with a specialization in housing construction and renovation projects. The firm comprises four multilingual architects. In collaboration with interior architects, structural engineers, and region-specific PEB (Performance Energy Building) consultants, the firm provides comprehensive and innovative solutions.

Within its diverse portfolio, the firm delves into industrial architecture, **emphasizing functionality while preserving the human aspect**. A notable project exemplifying this philosophy is the ELECTRIC industrial building located in Nivelles, Belgium.

In the design of ELECTRIC, deliberate separation between the office and industrial zones creates a bright and welcoming environment in alignment with the company's values. The office space, characterized by **luminosity and a convivial atmosphere**, reflects the firm's commitment to modern, people-centric workspaces.

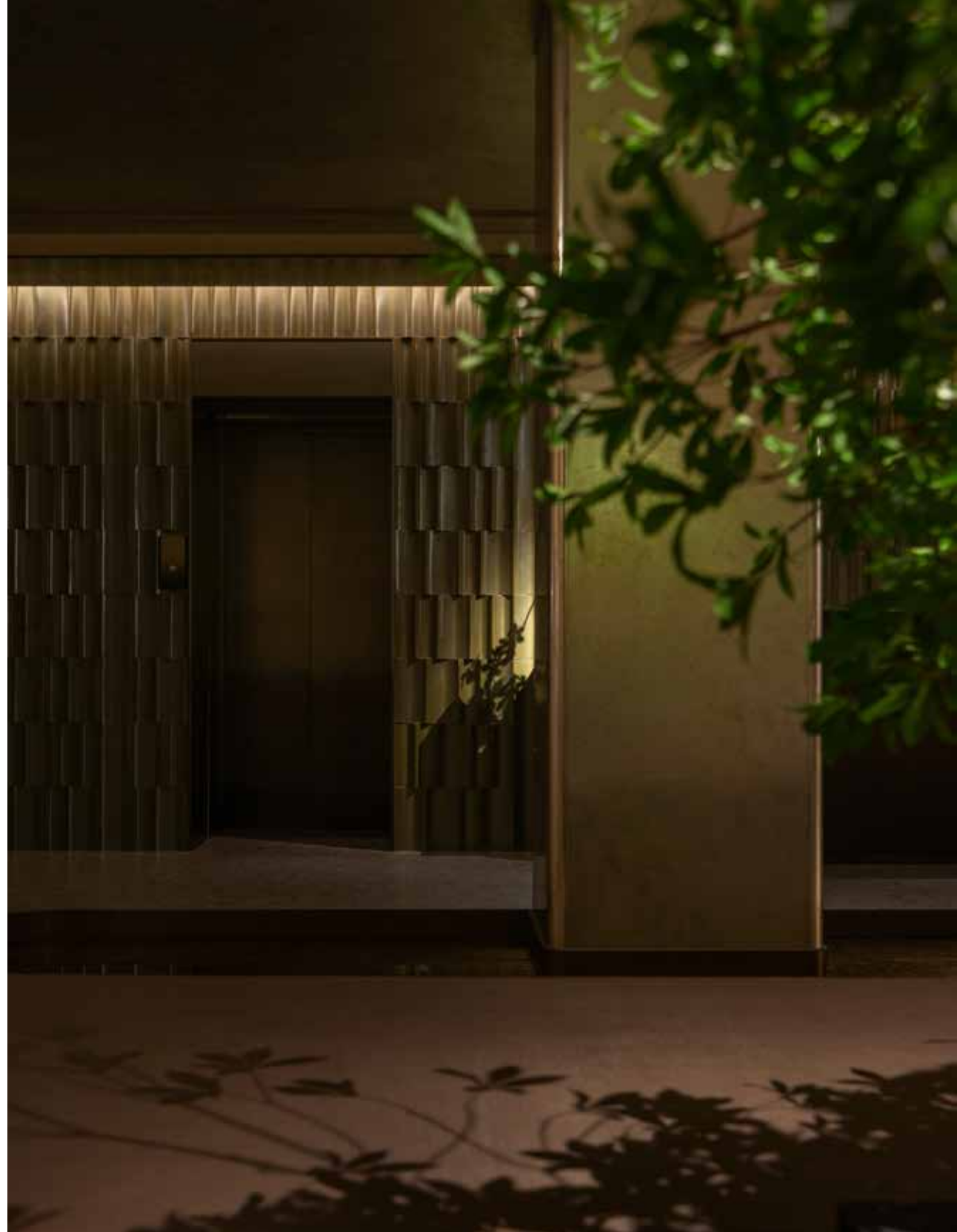
Simultaneously, shared spaces within the offices serve a dual purpose – fostering collaboration and comfort while showcasing innovative products distributed by the company. These spaces embody advancements in electrical installations, featuring photovoltaic panels, progressive lighting solutions, and cutting-edge home automation.

Aesthetic considerations are integral to the firm's approach, evident in the use of insulated wooden panels that seamlessly align with the project's vision. These panels contribute to the natural and acoustically efficient aspects of the design while adding an aesthetically pleasing touch to the overall composition.

At Eric Olivier Architectural Firm, dedication extends beyond commercial pursuits. The firm is committed to delivering architectural solutions that seamlessly blend functionality, aesthetics, and sustainability. The work at ELECTRIC in Nivelles reflects this commitment, showcasing the firm's dedication to creating spaces that are structurally sound and embody a spirit of innovation and progress in the field of architecture. ◀

▶ For more information: [www.ericolivier-architecte.be](http://www.ericolivier-architecte.be)  
Photo credits © Eric Olivier Architectes - © Luc Viatour





# Vermilion Zhou

“YIN XI” Teahouse, Jing’an Temple, Shanghai, China

*Vermilion Zhou Design Group introduces “YIN XI” Teahouse at Jing’an Temple, a culturally significant project in Shanghai, China.*

The teahouse embodies the subtle essence of Shanghai’s “hidden” tea culture, standing out with diverse and distinctive spatial experiences that have become a hallmark of the brand.

The Jing’an Temple branch’s inherent uniqueness serves as its connecting feature, with the golden apex symbolizing auspiciousness and reflecting hues reminiscent of tea.

The atmosphere is enhanced by the sounds of tea pouring and gurgling, resonating with tranquility, while calm ripples reflecting light create a fusion of the real and imaginary.

Teahouses, as a revival of Chinese cultural essence, serve as indispensable realms for public communication in contemporary life. They symbolize historical trade prosperity, functioning as vibrant centers for entertainment, emotional connections, and business transactions.

In the modern era, teahouses have evolved into spaces seamlessly integrating function and experiential satisfaction. The “YIN XI” teahouse, with its convergence of “gold,” “sound,” and “water,” provides a secluded escape from the outside world, allowing visitors to experience its charming “rippling” and “courtyard” ambiance. ◀

▶ For more information: [www.vermilionzhou.com](http://www.vermilionzhou.com)  
Photo credits © Jian Quan Wu







# The tap that does it all

100°C boiling, filtered and chilled still and sparkling water

Instant 100°C boiling water at any time of the day: Convenience in the kitchen is the reason to buy a Quooker tap. When you dispense water from your Quooker tap, you use the exact amount of water you need, so you don't unnecessarily waste water or energy. Combine your Quooker tap with a CUBE for instant filtered and chilled still and sparkling water. This way you save time, space, and minimize the use of plastic. Very convenient and sustainable. [Discover all the advantages on quooker.be](https://www.quooker.be).



## Discover SONO by Technifeutre

- wall and ceiling covering;
- wall decoration;
- design accessories;
- work space design, office: partition walls, acoustic partitions, notice boards;
- upholstery and covering of furniture (tablecloths for conference tables, etc.).

ACOUSTIC EXCELLENCE FOR EVERY SPACE!

Technifeutre – Technivilt  
rue du Bosquet, 15  
B-1400 Nivelles

Tél.: +32 (0)67 21 13 32  
info@technifeutre.be  
www.technifeutre.be

**SONO**  
Acoustic solutions  
www.technifeutre.be





© Wellness Domaine Allard - Kortesseem

## New: Exclusive round planters

A couple of mighty planters decorated with an old Japanese Acer and grass will teleport you in a flash to Italy of the South of France. Manufactured from robust high-quality steel, WALFiLii is probably the most durable. Pure design. Curved cortensteel or painted in any color of finish. From Amsterdam to Nice and from Knokke to Saint-Tropez. It is easy to recognize the original WALFiLii planters by the sleek logo lasered into the steel. The guarantee for timeless reliability.



Discover the world of



+32 (0)3 605 18 84  
info@walfilii.com  
www.walfilii.com



## No Wood, No Compromise. A Revolution in Outdoor Flooring and Cladding.

This advanced material combines the warm appearance of wood with durability, without any disadvantages. The authentic wood feel without the need for painting or maintenance. Slip-resistant, ideal for decks, balconies, garden paths, poolside decking, and facades. Unique, as it contains no wood and lasts a lifetime. **Discover the future of outdoor living with Millboard.**

Official importer Benelux



[wooddck.be](http://wooddck.be)

Free samples





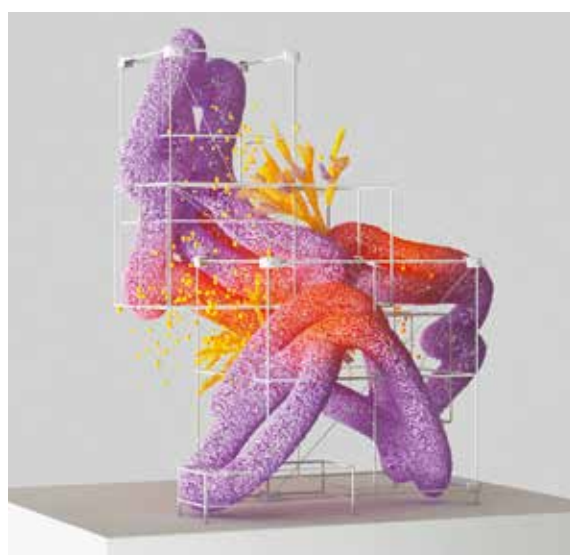


# BAU

**January 13–17, 2025,  
Messe München**

World's Leading Trade Fair for  
Architecture, Materials, Systems

[bau-muenchen.com](http://bau-muenchen.com)



# mipim<sup>®</sup>

## The Global Urban Festival

Pre-opening 11 March

**12–15 March 2024**

Palais des Festivals, Cannes, France

Built by  
**RX** In the business of  
building businesses

[mipim.com](http://mipim.com)





# SOUNDDDESIGN CLEANEO

Unmatched Acoustic Aesthetics



Ceilings play a crucial role in shaping spatial experiences, and Knauf SoundDesign Cleaneo perforated plasterboards masterfully combine acoustic and aesthetic qualities. This innovative solution adds a creative touch to spaces, absorbing sound uniquely with versatile perforation patterns like continuous, staggered, random, or block. The white or black membrane on the back enhances rhythmic character, making it ideal for offices, theatres, restaurants, schools, hospitals, and health centers.



## ADVANTAGES

- Round, square, rectangular or ridged perforations
- Paves the way for creative freedom
- Allows sound correction adapted to the space
- Regulates reverberation time and absorption
- UFF edges for fast, foolproof installation
- 30' fire resistance



Maison communale d'Ixelles - Bur.arch. A2RC ARCHITECTS - © Marc Detiffe



[www.knauf.com](http://www.knauf.com) **KNAUF**